



STATEMENT OF QUALIFICATIONS



2020



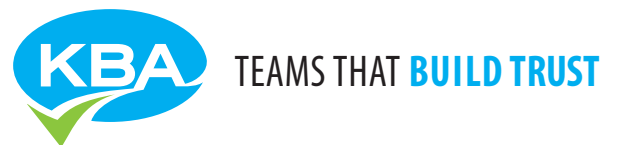
Committed to safety.

KBA has a strong culture of embracing safety.

We start each week with a Safety Moment survey to reinforce the ongoing importance of safety.

The KBA Safety Committee meets monthly to maintain our Accident Prevention Program, provide employee training, and administer the KBA Safety Team Award program, which rewards staff for proactive efforts.

**SAFETY
MATTERS**



COMPANY PROFILE *A Purpose-Built Firm*



A Purpose-Built Firm

Small Business by SBA standard for NAICS 237310
WA State WBE Certification: WS2F0011296

KBA is focused on Construction Management services. We are a firm purposefully structured to support our project teams and clients.

KBA, Inc. is respected as one of the largest and most capable construction management (CM) firms in the Northwest. Since 1994, KBA has specialized in SMART & STRATEGIC® management of public and private projects. KBA's services include:

- Construction Management (CM)
- Project/Program Management
- Specialty Services

Areas of Expertise

KBA has contributed to the delivery of projects amounting to more than \$9 billion in construction value within the following market sectors:

- Roads and Utilities
- Bridges and Highways
- Transit
- Water and Wastewater
- QA/Constructability/Land Development/Buildings

KBA has talent and depth. With 70+ field personnel, KBA selects the right person for the task at hand. Our depth of talent provides both choice and redundancy.

KBA Innovation

KBA works for owners and clients that seek innovation, dedication, and commitment from their construction management consultant. From pre-design to close-out, KBA delivers seamless coordination, innovative solutions, and proactive risk management. Some of the differentiators that set KBA apart include:

- QA/QC audits and Best Practices benchmarking
- Workflow Enabled SharePoint document control system
- Company culture of "Project First" actions

Clear Communication

Good communication is the hallmark of sound construction management practices. We excel at communicating with contractors, designers and owners, as well utilities, citizens, communities, and businesses to coordinate and resolve construction issues. We focus on "Project First" as a common interest. We develop an understanding of what is important and critical to each stakeholder and identify the best communication channels to facilitate timely dissemination of information.



Practical Approach to Construction Challenges

We embrace a practical and realistic approach to addressing construction challenges, and we work collaboratively with our clients to address individual challenges as they arise. Through the incorporation of many lessons learned and process improvements, we thrive on intercepting and solving complex issues. Our pragmatic approach contributes to KBA's reputation as a SMART & STRATEGIC® CM firm.

Proactive Risk Management

Risk Management is a core competency for KBA as CM specialists. We've amassed the working experience and background to assess potential construction risks, and we've developed processes to proactively monitor and manage risk. These processes help minimize the likelihood of cost and schedule impacts to projects.

Skilled Personnel

KBA employs highly qualified project managers, resident engineers, inspectors, office engineers, documentation control specialists, and project administrators. Additionally, our project administrators contribute in the areas of value engineering, constructability review, project controls, cost, schedule, contracts, partnering, and permitting. With approximately 100 staff members, KBA is small enough to be flexible and responsive, yet big enough to manage large and complex projects. KBA professionals bring seasoned expertise and a can-do attitude to their projects, as well as a proven approach to anticipating

and quickly resolving construction issues. KBA has talented professionals at all levels of CM who can supplement project teams or provide specialty services as project needs fluctuate.

Advanced Systems and Tools

KBA's SharePoint CM Tool offers optimal project document control and communication with minimal start-up time and cost. It is highly customizable, completely searchable, and workflow-enabled. It helps control permissions, securities, visibility of information, tasks assignment for document reviews and approvals, and produces reports. KBA developed an easy-to-use Microsoft Access pay ledger for tracking bid items per pay schedule and preparing monthly progress estimates. Daily entry allows our Resident Engineers and Office Engineers to search bid items, field note records, descriptions, dates, and quantities, and to keep payment on track, audit ready, and error free, while facilitating a straightforward project closeout.

Over 25 Years of Providing CM Services

We are proud of what we have been able to accomplish in 25 years. KBA started as a small Construction Management firm, focused on residential planned communities. We specialize in Smart and Strategic construction management of public works projects, contributing to the delivery of \$7 billion of the area's most complex and technically challenging projects. Clients trust us to provide the quality, value of service, and collaborative problem solving that support positive outcomes. We have updated our logo to include a green check mark representing the successful accomplishment of goals and projects.

- Over 25 years of continuous operation
- Recognized for our commitment to diversity
- Developed lasting mentor/mentee relationships

KBA EARNED THE ACEC-WA (AMERICAN COUNCIL OF ENGINEERING COMPANIES) EXCELLENCE IN INCLUSION AWARD IN 2019 AND 2020. THIS PRESTIGIOUS AWARD IS GIVEN TO ACEC MEMBER FIRMS THAT ARE CHAMPIONS IN ADVANCING DIVERSITY AND FOSTERING A CULTURE OF INCLUSION WITHIN THEIR WORKFORCE, THEIR TEAMS, AND THE CLIENTS THEY SERVE.

Construction Management

KBA's full service construction management capabilities include contract administration, project documentation, inspection, construction coordination, analysis, and reporting. KBA's teams understand and share the Owner's vision, and actively engage at all levels of the project to address design conflicts and changed conditions, coordinate and/or expedite necessary third-party work, and communicate project needs. KBA's experienced staff anticipates field problems, articulates issues, and brings solutions forward to keep construction moving.

Contract Administration and Change Management

- Administer contracts
- Coordinate among agencies having jurisdiction
- Resolve, negotiate, and document changes
- Perform dispute resolution and claims analysis
- Provide quality management/quality verification (QM/QV) services

Inspection, Documentation, and Quality Assurance

- Monitor contractors' activities for compliance with contract documents and environmental permits
- Coordinate with utilities, agencies, and property owners/tenants
- Maintain records of materials and accepted work
- Maintain digital audit-ready documents
- Problem-solve when challenges arise
- Practiced in Federal Aid documentation standards

Project Scheduling, Controls, and Reporting

- Analyze contractor's baseline and progress schedules
- Forecast costs, document progress, and maintain ledger of work accepted for payment
- Assess earned-value of work-in-progress
- Reporting and forecasting



Project/Program Management

Clients find it extremely valuable to involve KBA early in the planning, design development, and pre-construction phases of their capital programs. KBA identifies opportunities to more efficiently deliver projects, condense schedule durations, provide mechanisms to manage project risk, and identify and resolve potential issues. Deliberate and purposeful project and program management saves time and money.

Program Planning

- Scope, quantify, and prioritize projects
- Strategize phasing, sequencing of work, and site utilization
- Recommend delivery method and procurement approach
- Define program scope and refine change control systems
- Prepare project funding plan and cash flow analysis

Design Phase Services

- Provide leadership to resolve design phase issues
- Assess project risk and identify management strategies
- Develop baseline schedule as basis for contract time
- Write, illustrate, edit, and publish written reports
- Collaborate on charrette panels

Pre-Construction Services

- Assist with preparation of bid documents
- Respond to bidder questions and issue addenda
- Obtain and evaluate bids
- Perform readiness reviews of rights-of-way, permits, construction staging, and third party utility agreements
- Coordinate public outreach programs

Specialty Services

KBA's experienced and qualified team members are widely recognized and valued locally and statewide. Our clients leverage KBA's specialty services to improve project design and delivery, reduce risk and cost, and trouble-shoot or avoid problems. KBA understands that every project is different and we are adept at flexing our specialty services to meet the specific needs of our clients.

Constructability/Biddability

- Conduct independent review of plans and specifications
- Validate quantities and payment terms for major bid items
- Perform a "plans-in-hand" review to confirm situational fit
- Review and advise on efficiency of construction staging
- Prepare risk assessment and identify critical issues

Consulting/Advising

- Facilitate partnering workshops
- Serve on Value Analysis panels
- Write project and construction management and administrative procedure manuals
- Serve on Dispute Review Boards
- Manage start-up testing and commissioning
- Conduct quality assurance (QA) audits

Teaching/Training

- Deliver training of construction practices to Client and Contractor organizations
- Develop and write technical documents
- Provide PlanGrid training
- Provide SharePoint training

PROJECT DELIVERY METHODS *Trusted to Succeed*

Design-Bid-Build (DBB)

KBA is adept at our role on a DBB project, whether we are performing full CM services, providing added support to the owner, or working as a sub to the Engineer of Record for CM services. We have deep experience at keeping our projects on schedule and providing the owner with the information needed to make informed decisions on project change orders.

- Pre-Construction Services
- Construction Administration & Management
- Funding Requirements Management
- Project Closeout



SOUND TRANSIT OPERATIONS AND MAINTENANCE FACILITY - EAST
BELLEVUE, WA

Design-Build (DB)/ Progressive Design-Build (PBD)

DB projects are more efficient and can be completed in a shorter period of time, as construction can commence prior to completion of the Design process. KBA has the knowledge and experience to keep projects utilizing this method of delivery on-track providing efficient document close out.

- Quality Management Plan (QMP) Formulation
- Quality Management Services
- Administer Design-Builder owner agreement
- Design Management
- Construction Management

General Contractor/ Construction Manager (GC/CM)

A project delivery method that facilitates collaboration among the owner, designer, and contractor by providing feedback throughout the design phase, this method reduces cost through acceleration and sharing of lessons learned by the contractor and owner. Communication is a core competency shared by all at KBA. Our communication skills make us a preferred partner for this method of project delivery.

- Pre-construction Services
- Construction Services
- Owner's Representative

**CITY OF OAK HARBOR
CLEAN WATER TREATMENT FACILITY**
OAK HARBOR, WA

2019 Project of the Year

Environment More than \$75 Million
Category, from the National American
Public Works Association (APWA)

2019 Project of the Year

Environment, More than \$75 Million
Category, from the Washington
Chapter of the American Public Works
Association (APWA)

2019 Distinguished Project Award

Innovation and Achievement in
Sustainability, from the Northwest
Construction Consumer Council
(NWCCC)

2019 Project Achievement Award

Construction Management, from
the Pacific Northwest Chapter of the
Construction Management Association
of America (CMAA)

2019 Excellence in Masonry Award

First Place, Government and Public
Category, from the Masonry Institute of
Washington

2018 Excellence in Concrete Construction

Infrastructure, Non Transportation
Category, from the Washington
Aggregates and Concrete Association

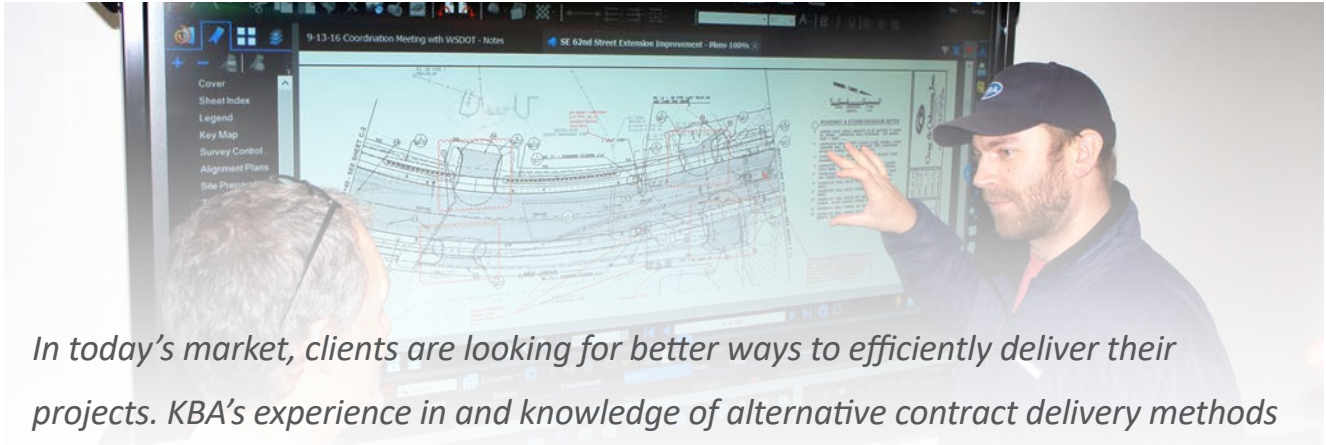
2018 Excellence in Concrete Construction

Infrastructure, Non Transportation
Category, from the Washington Chapter
of the American Concrete Institute (ACI)

*We are honored to have contributed
Construction Management and
Inspection services to this
award-winning project!*



PROJECT DELIVERY METHODS *Trusted to Succeed*



In today's market, clients are looking for better ways to efficiently deliver their projects. KBA's experience in and knowledge of alternative contract delivery methods gives our clients the flexibility to leverage the most appropriate delivery method to successfully complete their project.

PROJECT EXPERIENCE



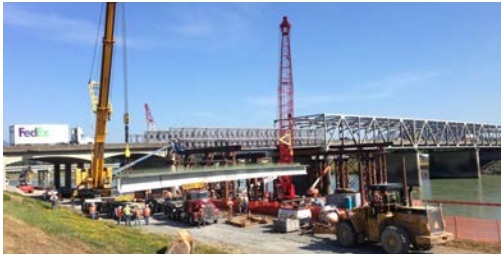
SOUND TRANSIT
BELLEVUE, WA

OPERATIONS AND MAINTENANCE FACILITY - EAST

The OMFE project is part of the ST2 Plan and will house, maintain and deploy the light rail vehicles as the system expands from 16 to 50 miles by 2023. The facility will include a 96 Light Rail Vehicle storage yard, 14-bay maintenance facility and offices to accommodate employees. In addition to the civil construction for the yard and maintenance/office facility, the work includes the installation of train control for the yard and yard entrance, traction power substations (both yard and shop), overhead catenary system (OCS), communications and SCADA. The project also includes the design and construction of the interim East Side Bike Trail along the former BNSF rail corridor from State Route 520 to the future Hospital Station south of the project site. KBA is the prime consultant, providing **Design-Build** Project Management Services.

KBA is leading a team providing design review and construction management for the maintenance facility, storage tracks, systems work and associated features. KBA's team is providing quality verification inspection of the Design-Builder's QC/QA program. KBA will share lessons learned from this active Design-Build PM/CM team.

Trusted to Succeed **PROJECT DELIVERY METHODS**



WSDOT
MOUNT VERNON, WA

SKAGIT RIVER BRIDGE PERMANENT BRIDGE REPLACEMENT

KBA provided Quality Management and Quality Assurance service for this \$7 million WSDOT Design-Build project that replaced the temporary I-5 Skagit River span 8 with a new structure designed to meet current standards. The **Design-Build** delivery method was critical in the quick completion of this project to open up a critical piece of local infrastructure.



CITY OF OAK HARBOR
OAK HARBOR, WA

CLEAN WATER TREATMENT FACILITY

KBA provided Construction Management and inspection services for this \$150 million **GC/CM** project (and the first GC/CM Heavy Civil delivery project in the State of Washington) that replaces two aging waste-water treatment facilities with a new clean water treatment facility meeting modern standards for reliability and performance. This project provided construction of a new membrane bioreactor (MBR) facility to replace the City's existing facilities (lagoon and rotating biological contactor) to provide continued reliable wastewater service to the community of Oak Harbor while protecting and preserving the surrounding environment (Puget Sound, Oak Harbor, and Crescent Harbor).

Project challenges included: complex geotechnical conditions; location relative to the 100-year flood plain; adjacent to well-used public spaces; potential for cultural resources to be discovered during construction; and adjacent to existing commercial and other heavy traffic areas. These issues were addressed with constant communications with project stakeholders. This project has been recognized by numerous agencies with awards for design, construction, and creative implementation.



SOUND TRANSIT
SEATTLE, WA

UNIVERSITY LINK LIGHT RAIL, UW STATION (U250)

KBA was part of the Seattle Tunnel and Rail Team Joint Venture (START JV) CMC on the University of Washington Station Link Light Rail project. The University of Washington Station (UWS) involved top-down construction for an underground transit station located between Montlake Boulevard and Husky Stadium at 100 feet below grade. Tight logistics, innovative construction methodology, and its status as Sound Transit's first **GC/CM** contract made it a very challenging project to manage.

Pre-construction services provided by KBA included assistance in document preparation, MACC negotiations, early selection of mechanical and electrical subcontractors, bid package preparations, value engineering, constructability review, and risk management assessments.

SKILLED PERSONNEL *Teams that Build Trust*

Teams that Build Trust

KBA brings value to projects through teamwork. We seek to maintain a workforce reflective of the diversity of the communities in which we work.

KBA staff members are committed to superior quality and value of service. Our team members enjoy working collaboratively with each other and our clients to meet project goals.

KBA’s reputation for excellence stems from our uniqueness of talent, the value we deliver, and our ability to consistently provide practical solutions. Clients select KBA not just for our firm expertise, but more importantly, for the caliber and passion of our people.

KBA’s Quality Assurance program provides an added benefit to clients. With a range of expertise on staff, KBA monitors

the quality of construction management services through client interviews, project showcases, record audits, and job site visits. When gaps arise, KBA has the resources to provide mentoring and training to bridge these gaps. KBA is passionate about the quality and consistency of service delivery and makes resources available to clients, such as lead representatives in Quality Assurance.

Our past performance is directly tied to the diligent, ongoing training and development of our staff. Our people are the best in the industry. They are led, supported, and mentored by a caring, proactive, and professional group of principals who steadfastly manage the delivery of best-value services.

KBA BY THE NUMBERS

4	25	20	34	104
CERTIFIED PUBLIC INFRASTRUCTURE INSPECTORS	POSITION SPECIFIC CREDENTIALS	CERTIFIED EROSION AND SEDIMENT CONTROL LEADS	PEs CCMs PMPs	TEAM PLAYERS

FUNDING SOURCES

FHWA
FTA
Additional Federal
State
Local/Municipal

CLIENT TYPES

State Government/Agency
Private Development/Other
City/County
Transit/Port

Teams that Build Trust **SKILLED PERSONNEL**



KBA'S CORE VALUES

Professionalism and integrity direct our actions.
We value people, relationships, and community.
Our passion stimulates creative solutions.
We deliver quality results.

KBA REGIONAL CONTACTS



Mount Vernon | Kris Betty | Dave Mohler | 425-214-5064

Seattle | K. Adams | Paul Garrett | Kevin Stoll | 425-214-5082

Bellevue | Kris Overleese | Roger Smith | Mark Fuglevand
Sam Schuyler | Cathy Arnold | 425-455-9720

SKILLED PERSONNEL *KBA's Principals and Project Managers*

KRISTEN BETTY

PE

Founder

Kris founded KBA in 1994 and has 39 years of experience as a Construction Manager on major civil and structural projects. Under Kris' leadership, KBA has become recognized as the region's premier construction management firm. Kris is an active leader in the engineering community and has held local chapter positions in the American Council of Engineering Companies (ACEC), American Public Works Association (APWA), and Construction Management Association of America (CMAA).



KRIS OVERLEESE

PE

President

Kris brings 24 years of experience as a public works Director, City Engineer, Capital Projects Manager, and Management Analyst to her position as KBA's President. She excels at policy and procedure development, project management, innovative design, federal funding, grant management, resource management, and communication. Kris currently serves on the Foundation Board for the Lake Washington Institute of Technology in Kirkland. She is also a Mentor for the Women in Transportation (WTS) mentoring program.



K. WENDELL ADAMS

PE

Principal

K. has 36 years of experience with public works projects. As a City Engineer for much of his career, his areas of expertise include supervising and managing the construction, operations, and maintenance of city capital improvement projects. He is an active member of APWA and is deeply involved with the public works community. K. advises local agencies on project management, project funding, and construction management.



ROGER SMITH

PE

Principal

Roger has 32 years of experience with complex bridge and heavy civil construction projects throughout the Western United States. With a background in construction management and public project design, he excels at coordinating with multiple agencies during all phases of the project. Roger's depth of experience allows for outstanding constructability reviews, as well as respected contract positions as a Disputes Review Board (DRB) member.



MARK FUGLEVAND

PE

Principal

Mark has 34 years of extensive experience as a heavy highway contractor, assisting engineers and owners in the successful outcome of their projects. He enjoys solving and facilitating solutions to the problems and challenges that every project encounters. Mark's emphasis as a project manager at KBA is on WSDOT and municipal clients in King and Snohomish Counties.



KBA's Principals and Project Managers **SKILLED PERSONNEL**



Sam brings 43 years of transportation experience to his position as Project Manager at KBA after a 30-year career with WSDOT, including 11 years spent as an Assistant Local Programs Engineer. He is recognized for his expertise in the area of LAG Manual and FHWA documentation requirements, and for his construction management skills. Sam is passionate about delivering high-quality projects in line with the Owner's vision.

SAM SCHUYLER
Project Manager



Cathy joins KBA as a Project Manager after a successful 40-year career with WSDOT where she expertly managed construction, design, and contracting teams to deliver challenging and unique infrastructure projects. Her experience encompasses numerous project types including paving, highways, roads, bridges, culverts, and fish barrier removal using Design/Build and Design/Bid/Build delivery methods. Cathy builds trust and consensus between groups and individuals when solving complex problems.

CATHY ARNOLD
PE
Project Manager



Kevin has over 24 years of experience planning, designing, constructing, operating, and managing a wide variety of complex projects including the redevelopment of Iraq's Balad Air Base. In addition to his leadership skills, Kevin possesses exceptional talents as a project and construction manager. Kevin has a proven history of teaming and leading to deliver high-quality projects within schedule and budget in the most demanding environments.

KEVIN STOLL
PE, PMP
Project Manager



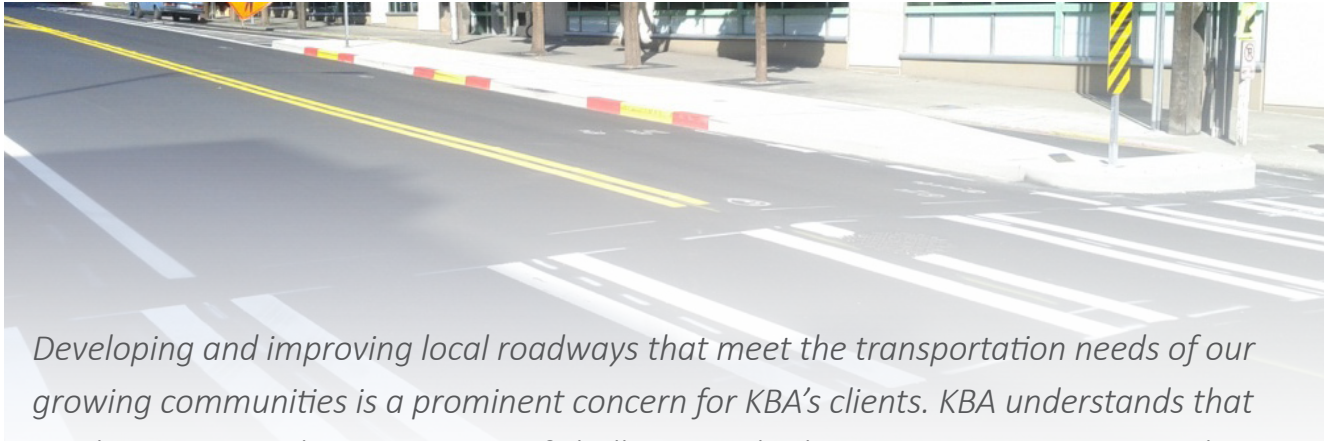
Dave's 28 years of experience encompass a variety of transportation projects and port facilities. His expertise includes construction quality assurance, project management, contract administration, and construction inspection for utilities, arterial, structural, and highway projects. Dave is familiar with steel girder, concrete box girder, and floating bridges; asphalt and PCC paving; precast, cast-in-place, and modular retaining walls; seismic retrofits; and drainage.

DAVE MOHLER
PE
Project Manager



Paul brings over 24 years of experience as an accomplished Resident Engineer, Project Manager, and Inspector. He has extensive expertise in all phases of construction, environmental, and landscape management. Paul has a passion for adopting new technology to improve outcomes. Paul leads project teams to deliver quality results while integrating methods to save both time and cost during construction.

PAUL GARRETT
CCM, CPII
Project Manager



Developing and improving local roadways that meet the transportation needs of our growing communities is a prominent concern for KBA's clients. KBA understands that road construction has its own set of challenges, whether constructing a new road through timber, widening a quiet residential street, or reconstructing a heavily traveled arterial in a busy metropolitan area.

ROADS AND UTILITIES



CITY OF MAPLE VALLEY
MAPLE VALLEY, WA

2019—IN PROGRESS

SR 169 ROAD WIDENING

KBA is providing full CM services for the City of Maple Valley's \$4.8 million street widening project. The City designed a wider SR 169 corridor to mitigate traffic in the growing city. The most notable feature of this project is the use of a soldier pile wall which permitted the addition of a commuter lane, bike lane, and sidewalk. A comprehensive drainage system as well as a state-of-the-art infiltration system. During KBA's initial review of the project it was determined a few items the designer incorporated into the project were not actually needed based on KBA's knowledge of the area's geological make-up from previous work in the area. By eliminating these items (structural soil and pedestrian handrail), we were able to reallocate resources to renovate an entire intersection, that was not in the original design, with the latest in traffic lighting, control, and pedestrian convenience. The resulting changes and upgrades were completed within the original timeframe.



SEATTLE DOT
SEATTLE, WA

2019—IN PROGRESS

2019 AAC PACKAGE 1 (N 40TH, N 50TH, GREEN LAKE, AND N 80TH)

KBA is providing construction management and inspection services for this \$23.2 million multiple roadway restoration project in the Wallingford and Green Lake areas. The project includes work on N 40th, N 50th, W & E Green Lake Drive N and E, Green Lake Way N, Green Lake Drive N, and N 80th Street. Work consists of roadway panel replacement; grind and overlay; 550 curb ramps; new, enhanced, or upgraded bike lanes; sidewalk repair and replacement; new signals and lighting; and SPU utility improvements. The project has over 150 traffic control plans and involves TESC measures.



CITY OF BELLEVUE
BELLEVUE, WA

2019—IN PROGRESS

124TH AVENUE NE – NE SPRING BOULEVARD TO NE ICHIGO WAY

KBA is providing construction management services in the BelRed area for the \$13 million, quarter-mile first phase of widening 124th Avenue NE from NE Spring Boulevard to NE Ichigo Way. With a nine-month road closure to thru traffic, significant coordination with utilities, businesses, adjacent projects, and the public is required to keep business access open while progressing on contract work. The concurrent Sound Transit East Link work at the bridge site has resulted in changing site conditions. KBA manages the multiple changes by cultivating great relationships with the contractor, design engineer, and the City of Bellevue.



CITY OF ISSAQUAH

2017—2019

SE 62ND STREET EXTENSION

KBA provided full construction management services for the extension of SE 62nd Street from East Lake Sammamish Parkway to Lake Drive. The project constructed a connecting roadway and two roundabouts, a multi-use trail connection, and sidewalks. Significant coordination with utilities, businesses, and the public was required to keep business access open. Before construction began, the contractor proposed to re-design the bridge with 36" diameter pipe piles, 70' and 90' long. When bearing resistance was not achieved as expected, KBA coordinated with the geotech, general contractor, designer, and client to revise the plans and solve the issue in real time. KBA established great relationships with all stakeholders, allowing better communication and collaboration to coordinate real-time resolutions to conflicting project demands.



CITY OF BOTHELL
BOTHELL, WA

2017—2018

MAIN STREET ENHANCEMENT

Working as a part of a blended City team, KBA provided construction management and inspection support for this \$5.7 million project. The project constructed a pedestrian-friendly downtown urban center by reworking the entire streetscape that included straightening the street's curved alignment, adding a new curbless street system with removable bollards, and installing unique flex zone grading which increased pedestrian mobility and facility usage, while correcting existing drainage problems.

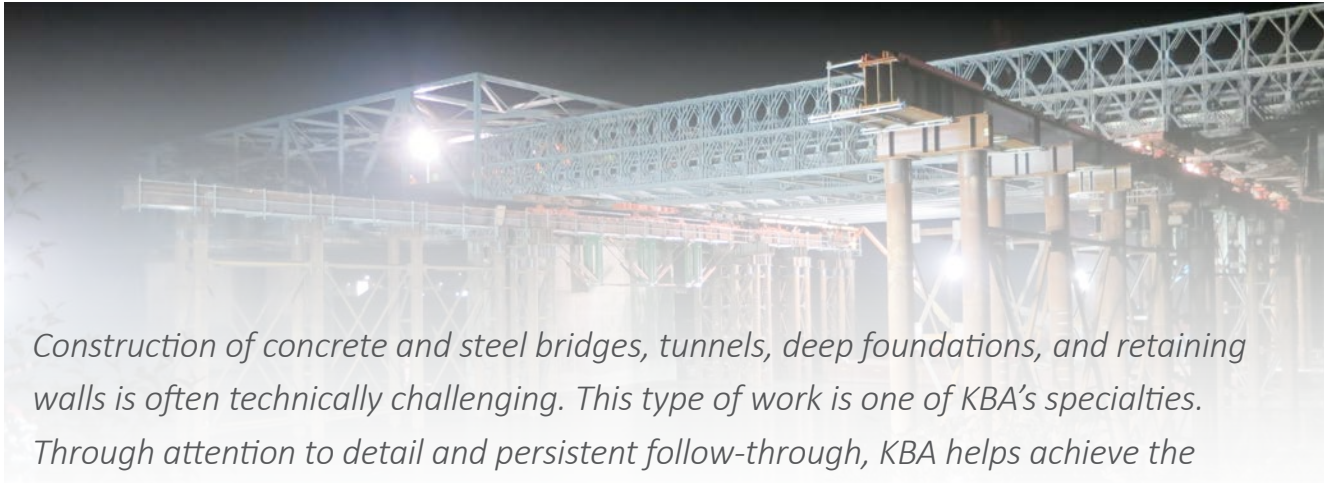


CITY OF SHORELINE
SHORELINE, WA

2008—2016

SR 99 AURORA CORRIDOR IMPROVEMENTS

KBA provided on-site construction management and inspection services for the multi-phase \$52 million Aurora Corridor Improvements project, which improves and enhances three miles along heavily-traveled Aurora Avenue North (SR 99) in Shoreline. Managing the flow of traffic through the project area is a significant priority and the KBA CM team's excellent communication and coordination efforts with the City of Shoreline, SPU, SCL, the contractor, and other affected parties are instrumental in facilitating the smooth flow of traffic while keeping the project on schedule.



Construction of concrete and steel bridges, tunnels, deep foundations, and retaining walls is often technically challenging. This type of work is one of KBA's specialties. Through attention to detail and persistent follow-through, KBA helps achieve the desired durability and quality of the structures while minimizing the impacts generated during the intensity of construction.

BRIDGES AND HIGHWAYS



CITY OF KENT
KENT, WA

2018—IN PROGRESS

KENT 228TH STREET GRADE SEPARATION

KBA is providing construction management and inspection services for this \$21 million project for the City of Kent. KBA worked with the Owner and contractor to install a CIPP liner in an existing sewer pipe instead of open cutting when existing utilities were discovered that complicated the contractor's ability to safely shore a trench. KBA also proposed and helped coordinate the use of used geofoam blocks the contractor owned, saving the project cost and kept usable material from going to a landfill. This project is funded with FHWA, State, and Local dollars.



CITY OF EVERETT
EVERETT, WA

2017—2019

GRAND AVENUE PARK BRIDGE

KBA provided the Resident Engineer on an integrated team with the City of Everett Construction Management group to construct a single-span (257 feet long and 24 feet deep) steel truss bridge in the City of Everett. The \$14 million combined utility and pedestrian bridge begins on Port of Everett property atop a 30-foot-high concrete tower with an elevator shaft serving as the west abutment. The bridge spans eastward an average 40 to 60 feet above SR529, five BNSF tracks, and a steep 80 feet high bluff before ending on the east abutment located along the northwest edge of Grand Avenue Park near 16th Street. It carries a 36-inch storm drain pipe and 30-inch combined sewer pipe with existing terminuses at the west end of 16th Street to existing outfalls in Puget Sound. To provide ADA compliant access for pedestrians. An elevator was constructed at the west end of the bridge for pedestrian use to for access between Grand Avenue Park and the Port of Everett.



CITY OF WOODINVILLE
WOODINVILLE, WA

2018—2019

SAMMAMISH RIVER BRIDGE REPLACEMENT

KBA provided full construction management services on this \$5.8 million project. The work under this contract included improvements to the Sammamish River Bridge. It widened SR 202 from the intersection of 131st Avenue NE to Woodinville-Redmond Road. This segment of SR 202 was widened to 4 lanes by constructing a new 2-lane bridge adjacent to the existing bridge. Railing and sidewalk modifications were also included for the existing bridge. In addition, the project included bike lanes, curb and gutter, and sidewalk installed on both sides of the road.



CITY OF ARLINGTON
ARLINGTON, WA

2018—2019

ARLINGTON VALLEY ROAD

KBA provided full construction management support for construction of the Arlington Valley Road, a \$4 million route linking 74th Avenue NE to 191 Place NE, just west of Highway 9. The new road provides another option for businesses along busy 67th Avenue to reach the highway and serves commuters, pedestrian/bicyclists, as well as trucks hauling supplies and products. The project constructed a new street having two traffic lanes and a center turn lane. The road is approximately three-quarters of a mile long. A paved pedestrian/bicycle path was constructed immediately adjacent to the new road.

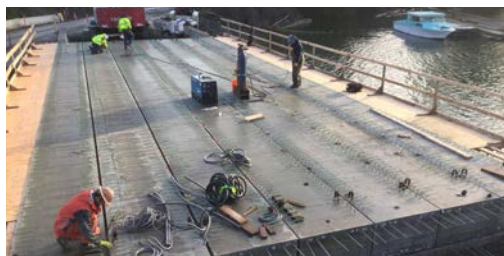


SKAGIT COUNTY
BURLINGTON, WA

2018—2019

BURLINGTON NORTHERN OVERPASS

KBA provided construction management and inspection services for this \$12 million federally funded bridge replacement project. Project elements included demolition of an existing 1,200-foot long, 72-bent timber trestle (built in 1936), and construction of a three-span prestressed concrete girder bridge with structural earth wall (SEW) approaches. The bridge foundations included 6- and 8-foot diameter drilled shafts, while the approach foundations included the installation of stone columns. This project required high attention to detail and communication/coordination skills as construction was completed over a live BNSF railroad track serving 26 trains per day.

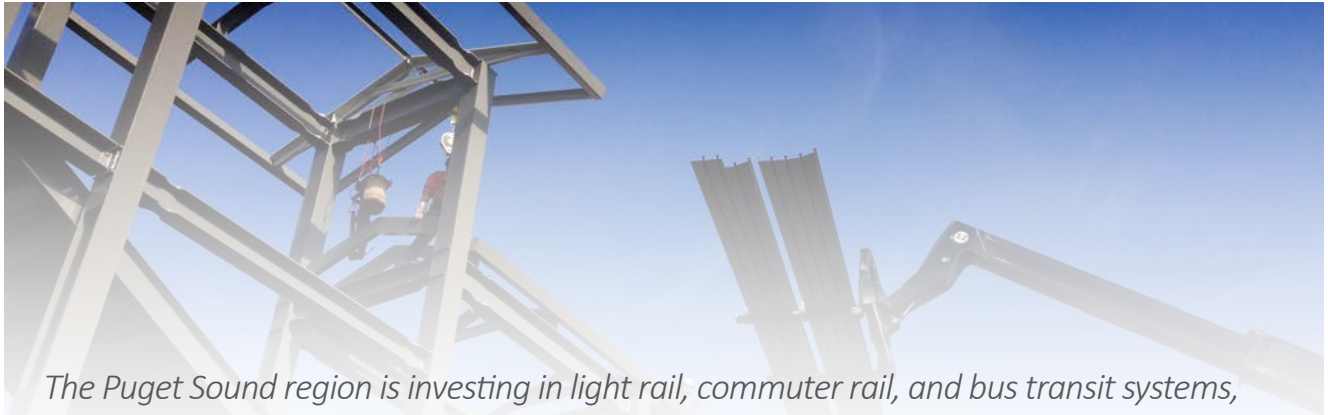


SAN JUAN COUNTY
ORCAS ISLAND, WA

2016—2017

DEER HARBOR BRIDGE REPLACEMENT PROJECT

KBA provided construction management and inspection services for this \$1.75 million bridge replacement project on Orcas Island. KBA's Resident Engineer was responsible for all documentation, Record of Materials (ROM) submittals, requests for information (RFI), certified payrolls, preparation of estimates, and change orders. KBA assisted with plan revisions and provided on-site monitoring of all construction activities and utility coordination. The County granted authority to KBA's Resident Engineer to troubleshoot and provide solutions to the constructability issues faced on this project, which kept the project moving forward and on schedule.



The Puget Sound region is investing in light rail, commuter rail, and bus transit systems, and KBA is assisting clients with construction projects that provide transportation choices for our region. Transit agencies rely on KBA's depth of experience in managing the construction and inspection of transit facilities that help keep local residents moving.

TRANSIT



SOUND TRANSIT
BELLEVUE, WA

2017—IN PROGRESS

OPERATIONS AND MAINTENANCE FACILITY - EAST

KBA is providing **Design Build Project Management** Services for this \$242 million project to construct an Operations and Maintenance Facility to store, maintain and deploy the vehicles associated with the expanding light rail service as the system expands from 16 to 50 miles by 2023. KBA is leading a blended team, providing design review and construction management for the maintenance facility, storage tracks, systems work and associated features. Our team is providing independent quality assurance of the Design-Builder's QC/QA program.




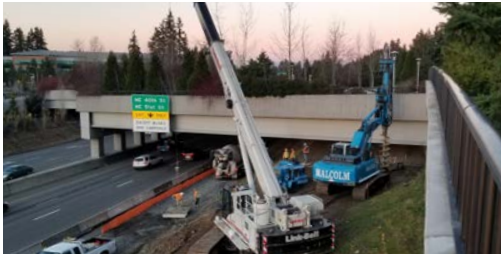
SOUND TRANSIT
SEATTLE, WA

2013—IN PROGRESS

NORTHGATE LINK LIGHT RAIL

KBA is providing construction management and inspection services for the construction of the \$440 million Northgate Link Light Rail extension. This **GC/CM** and **B-B** project constructs two 4.3-mile long segmentally lined, twin-bored, 21-foot diameter tunnels using EPB TBMs. Work also includes the installation of 23 cross passages excavated at intervals between the bored tunnels using sequential excavation methods, between Maple Leaf Portal and the University of Washington Station. Project elements include two underground stations, an elevated station and guideway, a parking garage, and trackwork.

 2018 Tunnel Achievement Award for Project Excellence,
Tunnel Business Magazine



SOUND TRANSIT
REDMOND, WA

2017—2019

EAST LINK LIGHT RAIL

KBA provided a DBPM Oversight Inspector for the East Link Light Rail project (E360 Segment), which extends the light rail system including design and civil LRT construction from the interface with E340 near SR 520 at NE 20th Street to the Overlake Transit Center (OTC) Station. This segment of the East Link project consists of at-grade, aerial, and retained cut double track guideway; two at-grade stations (Overlake Village Station and OTC Station); a 320-stall parking garage at the OTC; and two pedestrian bridges crossing SR 520. This project has the added element of the OTC being functional during construction.



SOUND TRANSIT
SEATTLE, WA

2015—2017

SOUTH 200TH LINK EXTENSION PARKING GARAGE

KBA provided construction management and inspection services for this \$30 million **Design-Build** project. The 7-story, open-air parking structure contains 1,050 parking stalls, commercial retail space, and an architectural metal-tube façade. The parking garage is a concrete cast-in-place structure, the exterior finished with an artistic metal translucent screen. A new water quality and detention vault was provided for the garage and the mechanical, electrical, and fire protection systems are integrated with a building management system. Station Area Roadway upgrades included reconstruction South 200th Street from International Boulevard to Des Moines Creek, installing a three-sided culvert bridge for fish passage, new utilities, and sidewalks, and concrete cantilever retaining walls.



SOUND TRANSIT
MUKILTEO, WA

2012—2016

MUKILTEO SOUNDER COMMUTER RAIL STATION, SOUTH PLATFORM

KBA provided construction management and inspection services for this \$6.4 million Bid-Build project to construct a new south platform at Mukilteo Station. Project work included a new platform within the BNSF Railroad right-of-way, with 24-inch drilled shafts, shoring with Cooper E-80 loadings, concrete station platform, two steel and glass stair towers, elevators, overcrossing (above two live BNSF main lines), landscaping, and art elements. KBA staff is knowledgeable of BNSF's rules and regulations regarding work near live tracks, and proactively work with the contractor to maintain a safe work environment.



SOUND TRANSIT
SEATTLE, WA

2009—2016

UNIVERSITY LINK LIGHT RAIL

KBA provided construction management and tunnel inspection services for the \$1.9 billion University Link Light Rail project. Delivery method was by **GC/CM** as part of the START JV CMC. The project extended the existing light rail service to the north, connecting the University of Washington and Capitol Hill to downtown Seattle and the airport. Work included 3.15 miles of new tunnel track and two underground stations. This project has received numerous awards.



KBA positively impacts the health and safety of communities through our contribution to water and wastewater projects. KBA works with cities, counties, public utility districts, and private developers in the proper construction of water supply, treatment and storage facilities, as well as wastewater conveyance, collection, and treatment systems.

WATER AND WASTEWATER



CITY OF OAK HARBOR
OAK HARBOR, WA

2015—2019

CLEAN WATER FACILITY - HEAVY CIVIL GC/CM

KBA provided construction management and inspection services for this \$150 million heavy civil **GC/CM** project that replaced two aging wastewater treatment facilities with a new clean water treatment facility that meets modern standards for reliability and performance. This project provided the construction of a new membrane bioreactor (MBR) facility to replace the City's existing facilities (lagoon and rotating biological contactor), providing continued reliable wastewater service to the community of Oak Harbor while protecting and preserving the surrounding environment (Puget Sound, Oak and, Crescent Harbors).

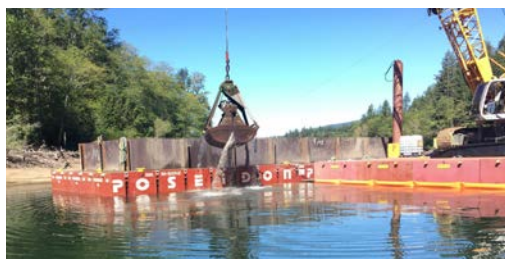


CITY OF PORT ANGELES
PORT ANGELES, WA

2014—2017


COMBINED SEWER OVERFLOW

KBA provided office engineering services for the \$14.9 million Phase 2 CSO Project that is part of the City's approved CSO Reduction Program. The project increased flow conveyance capacity in the mainlines from downtown to the existing wastewater treatment plant to accommodate peak flows from storm events; increased the capacity of the treatment plant; utilized an existing above-ground storage tank to store excess flows; and increased the capacity of the treatment plant outfall system. Elements of the work included construction of an above and below grade pump station building for housing various mechanical, process, and electrical equipment; piping systems; new gravity sewer and storm drain; replacement of sidewalk, curb, and road surfaces as required; and traffic control.



SEATTLE PUBLIC UTILITIES
NORTH BEND, WA

2015

 2017 Best Project, Water/Environment, ENR Northwest

MORSE LAKE PUMP PLANT

KBA provided construction management and inspection services for this \$16.3 million project, located entirely within the secured Cedar River Municipal Watershed. The facility improves water transfer from Chester Morse Lake into the lower watershed, thereby providing the capability to meet water system demands and in-stream flows during dry conditions. KBA successfully met project challenges including completing all work while maintaining a fully operational water supply reservoir, with emphasis on worker safety and water quality protection.



SEATTLE CITY LIGHT
DIABLO, WA

2015

TOWN OF DIABLO LARGE ONSITE SEWER SYSTEM

KBA provided construction management services on this \$3.3 million project. KBA inspected septic tanks as they were delivered to the site, inspected all rough-in plumbing installed in all houses in the Diablo “Hollywood” community, and inspected installation of electrical receptacles/conduit installed in individual houses and for tank systems. The houses and buildings in the Diablo community originally sent their wastewater to an aging wastewater treatment plant. This project replaced the conveyance and wastewater treatment plant with an on-site tank farm and individual septic tanks.



SEATTLE PUBLIC UTILITIES
RAVENSDALE, WA

2014—2015

LANDSBURG FACILITIES AND CHLORINATION PROJECT

KBA provided construction management and inspection services for this \$6.9 million project that constructed a new 4,500 SF Operations Center Building with control room, locker rooms, offices, and water lab. The project also replaced the existing chlorine gas system with a liquid sodium hypochlorite system. Work included a new antenna tower, foundation, grounding system, and antenna system; upgrade of the supervisory control and data acquisition monitoring system; and construction of new concrete drives, pervious concrete parking area, and turf overflow parking.



CITY OF OAK HARBOR
OAK HARBOR, WA

2013—2014

NORTH RESERVOIR

KBA provided construction management and inspection services for this \$4.8 million project to construct a 4-million-gallon welded steel reservoir. Work elements included clearing and grading the project site; construction of a storm drainage collection system, detention piping, and a drainage ditch/bioswale; pervious asphalt access road and site parking; pressure-reducing valve station; and connection to existing waterlines. KBA staff’s experience with tank projects and understanding of the client’s risk on this project gave them the opportunity to be proactive during tank construction.

EXPERTISE *Quality Assurance, Constructability, Land Development, Buildings, etc.*



In addition to our core construction management and inspection services, KBA provides value-added services including Quality Assurance, Constructability Review, Change Order Management, and Risk Management on a variety of project types. KBA also successfully manages the construction of buildings for private developers as well as municipal facilities for public agencies.

ADDITIONAL PROJECTS



PULTE HOMES
SNOQUALMIE, WA

2019—IN PROGRESS

PULTE HOMES, PERMITTING AND CLOSEOUT SERVICES

KBA worked with Developer, City of Snoqualmie, and public utilities to complete the closeout of City of Snoqualmie bonds associated with the development of the Snoqualmie Ridge Master Planned Community. Bonds included performance and maintenance for roadways, utilities, landscaping, and sensitive areas restoration and monitoring. Bond release was predicated on the timely completion of punch list items.



CITY OF ISSAQUAH
ISSAQUAH, WA

2016—2017

SE 62ND ST EXTENSION IMPROVEMENTS, CONSTRUCTABILITY REVIEW

KBA provided constructability and plan submittal review for the roadway and bridge plans at the 60%, 65%, 90%, 100% design level. KBA collaborated with the Design Engineer to provide input to improve the level of constructability of the project, which helped to create plans that were biddable, buildable, and maintainable for the City. KBA delivered comments on the Specifications that clarified the intent of the design and provided bid items to limit over-runs in erosion control. When the final bid package was put to ad the awarded Contract was approximately \$6 million under the Design Engineer's estimate.



US DOT
DARRINGTON, WA

2018—2019

DARRINGTON EMERGENCY REPAIRS

KBA developed a Quality Control (QC) Plan and provided QC Manager Services for this \$2.2 million project to repair 17 individual US Forest Service roads, near Darrington, WA. Sites had been washed out or otherwise rendered impassable. General repairs include installation of upsized corrugated metal culverts/ large arched culvert, and backfill with available near-site granular materials. Installation of concrete, riprap, and woody debris is also included in the work.



WA STATE DOT
SEATTLE/MEDINA, WA

2012—2017

SR 520 BRIDGE REPLACEMENT & HOV PROGRAM, RISK ANALYSIS

KBA provided change order management and risk analysis on this \$753 million dollar, high-profile design-build project that will replace the existing SR 520 floating bridge, and relieve congestion by improving transit and HOV operations. Major construction work elements include: a new six-lane floating bridge, with HOV lanes, bicycle/pedestrian facilities, and the ability to accommodate future light rail.



QUADRANT HOMES
REDMOND AND BELLEVUE, WA

2016

TRAILSIDE CONSTRUCTION MANAGEMENT, OWNER'S REPRESENTATION

KBA was the Owner's Representative for Quadrant Homes who developed several plats and condominium projects, totaling \$8 million, in the Redmond and Bellevue areas. KBA provided consultation, contract administration, and field observations which helped to ensure that schedules and budgets were maintained. KBA also helped to address constructability issues and to handle questions or concerns with the various agencies that had jurisdiction.



PULTE HOMES
KIRKLAND AND DUVALL, WA

2016

PULTE HOMES DEVELOPMENT CONTRACTS, OWNER'S REPRESENTATION

KBA was the Owner's Representative for Pulte Homes who developed two single-family residential lot developments in Kirkland (Marinwood) and Duvall (North Hill). Contract scope included clearing and grubbing, grading, underground wet and dry utilities, stormwater facilities, concrete curb and gutter, sidewalk, asphalt paving, street lighting, irrigation and landscaping, and project amenities. KBA developed two separate bid packages that were distributed to contractors, handled questions during the bidding period, and distributed addendum.



UNIVERSITY OF WASHINGTON
SEATTLE, WA

2015—2016

BURKE-GILMAN TRAIL IMPROVEMENTS, PHASE 1

KBA provided construction management and inspection for the Burke-Gilman Trail within the UW campus. The project widened the trail; added dedicated bicycle and pedestrian lanes; installed new lights and more blue emergency phones; improved trail intersections and ADA access; created mixing zones with amenities such as benches, trash cans, and bicycle parking; and improved sightlines. Grant funding came from the Puget Sound Regional Council (PSRC) through the federal Congestion Mitigation and Air Quality (CMAQ) program.





KBA SERVICE AREAS

CONSTRUCTION MANAGEMENT

Contract Administration and Change Management
Inspection, Documentation and Quality Assurance
Project Scheduling, Controls and Reporting

PROJECT/PROGRAM MANAGEMENT

Program Planning
Design Phase Services
Pre-Construction Services

SPECIALTY SERVICES

Constructability/Biddability
Consulting/Advising
Teaching/Training

KBA is an Equal Opportunity Employer and is committed to creating a work environment that is free of discrimination and unlawful harassment and full of opportunity for all with a workforce that reflects the region's diversity. KBA does not discriminate against disabled applicants and employees who will be afforded reasonable accommodation.

KBACM.com



TEAMS THAT **BUILD TRUST**

Bellevue Main Office:

425 455 9720

Seattle Office:

425 214 5082

Mount Vernon Office:

425 214 5064



© Christiana Childers Photography

KBACM.com